

8 Elmwood Street, Savile Park, Halifax, HX1 3HE

Offers Around £105,000

- : Desirable Location
- : Attractive Accommodation
- : Modern Bathroom
- : Easy Access to Halifax Town Centre
- : Realistically Priced
- : Close to Savile Park & Skircoat Green
- : Garden to front
- : Modern Kitchen
- : uPVC Double Glazing & Gas Central Heating
- : Viewing Essential



Directions

SAT NAV HX1 3HE

Viewings

Viewings by arrangement only. Call 01422 349222 to make an appointment.

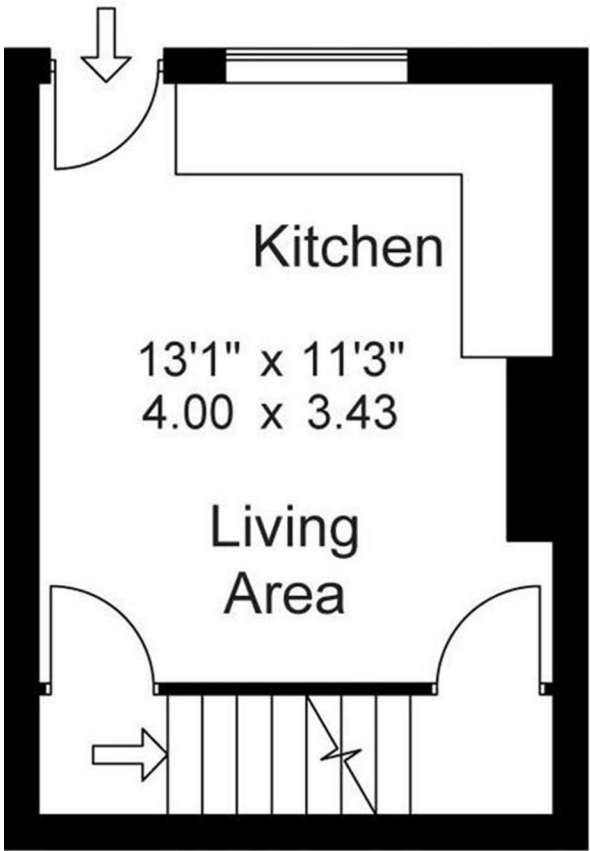
Council Tax Band:

A

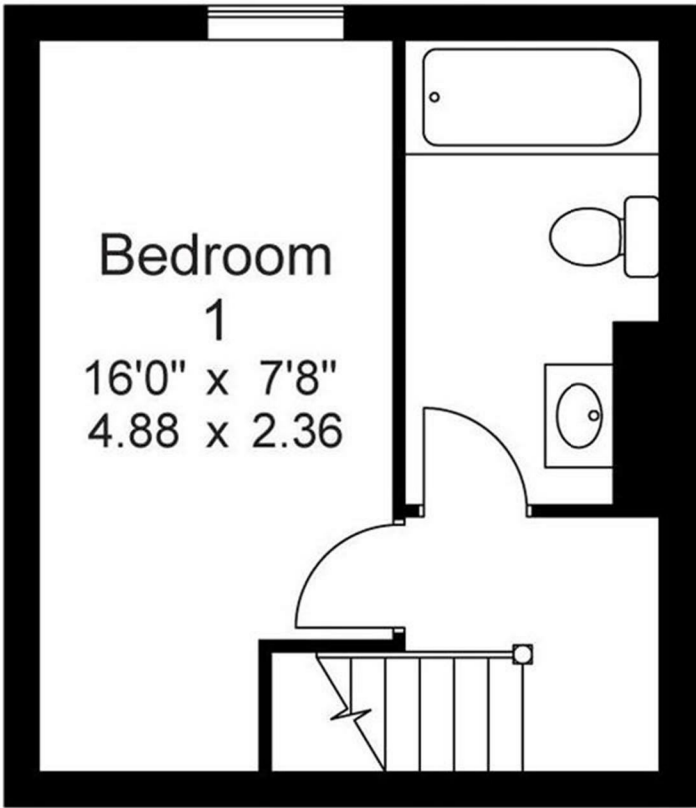
EPC Rating:

D

Energy Efficiency Rating		
	Current	Potential
Very energy efficient - lower running costs		
(92 plus) A		94
(81-91) B		
(69-80) C		
(55-68) D	63	
(29-54) E		
(21-38) F		
(1-20) G		
Not energy efficient - higher running costs		
England & Wales		EU Directive 2002/91/EC



Ground Floor



First Floor